

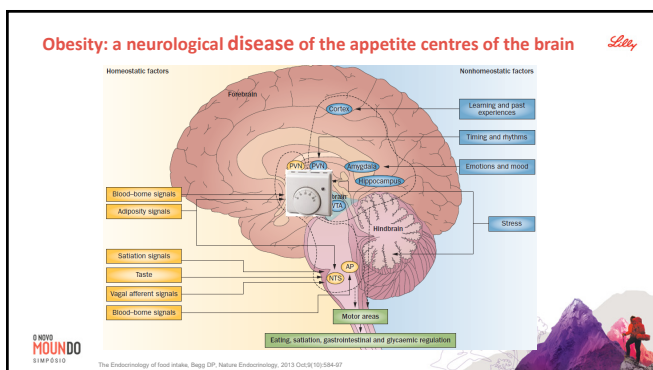
An introduction to Mounjaro - By Professor Alex Miras



1

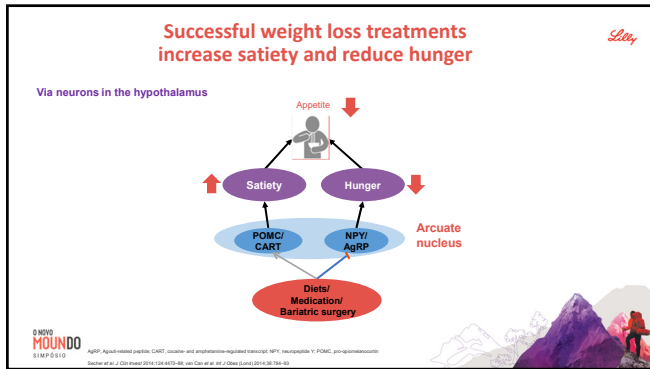


2

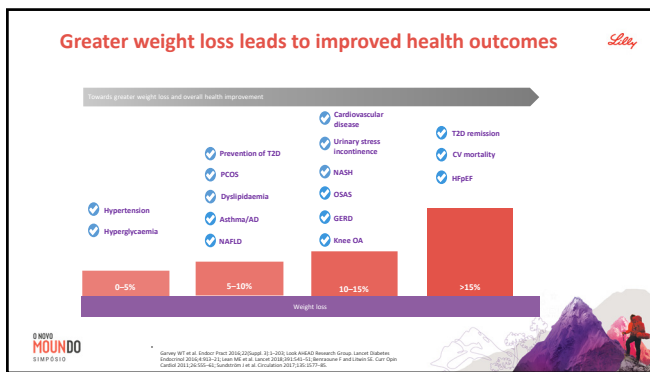


3

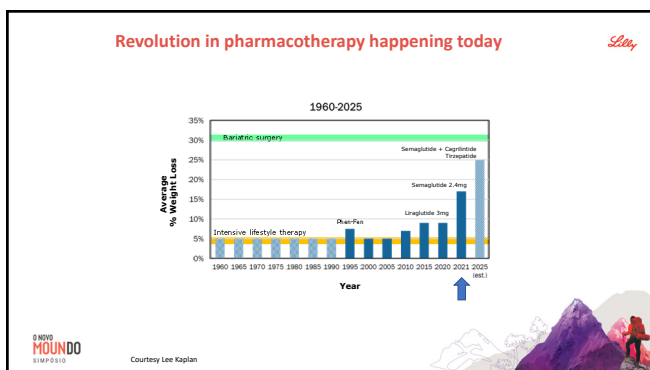
An introduction to Mounjaro - By Professor Alex Miras



4



5



6

7



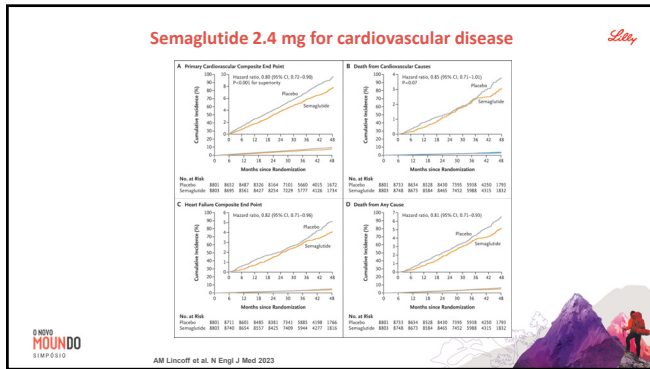
8



9



An introduction to Mounjaro - By Professor Alex Miras



10

Mounjaro Is a Single Molecule Designed to Activate Both the GIP and GLP-1 Receptors¹⁻³

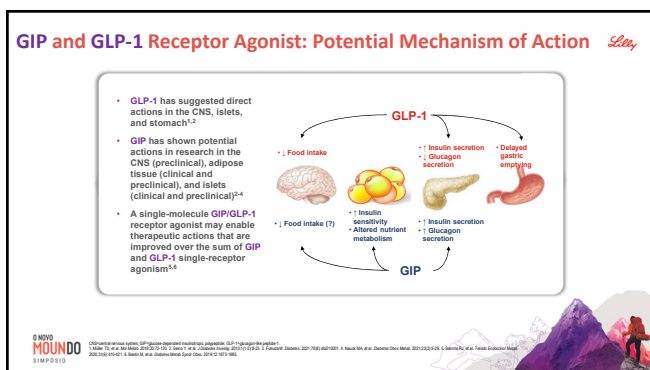
Structure	Based on the native GIP sequence ^{1,2}
Receptor activity	Activity on the GIP receptor is similar to the native GIP hormone, whereas activity of Mounjaro on the GLP-1 receptor is lower compared to the native GLP-1 hormone ³
Mean half-life	Approximately 5 days, enabling once-weekly dosing ¹
Dose adjustment	No dose adjustment of Mounjaro is recommended for patients with renal or hepatic impairment ²

GIP=Glucose-dependent lipotropic polypeptide; GLP-1=glucagon-like peptide-1.
1. Wilson TS, et al. J Clin Invest. 2015;125(12):4193-4202. Mounjaro (semaglutide, once-weekly). Summary of Product Characteristics. Hovion, Utrecht, Netherlands. © Lilly and Company. 2. Coskun T, et al. MGH Med. 2018;18: 3-14.
3. Wilson TS, et al. J Clin Invest. 2015;125(12):4193-4202. Mounjaro (semaglutide, once-weekly). Summary of Product Characteristics. Hovion, Utrecht, Netherlands. © Lilly and Company. 3. Coskun T, et al. MGH Med. 2018;18: 3-14.

WEIGHT MANAGEMENT

© 2024 Lilly and Company. All rights reserved. For speaker training purposes only.

11



12

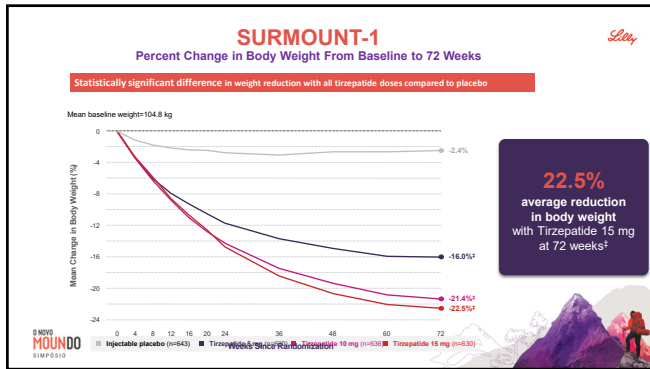
13

[illegible]

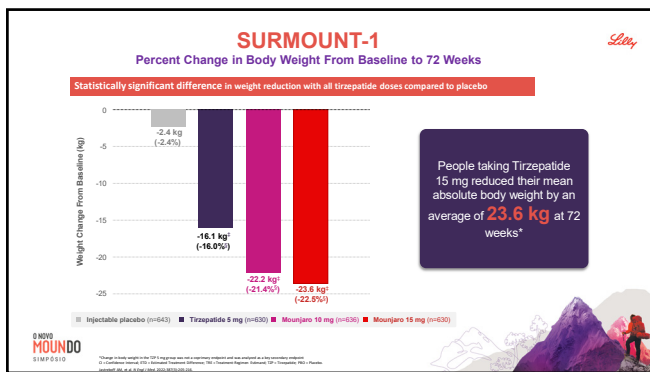
14

15

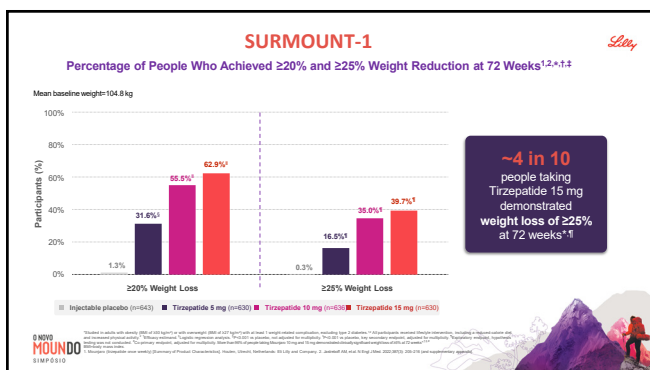
An introduction to Mounjaro - By Professor Alex Miras



16

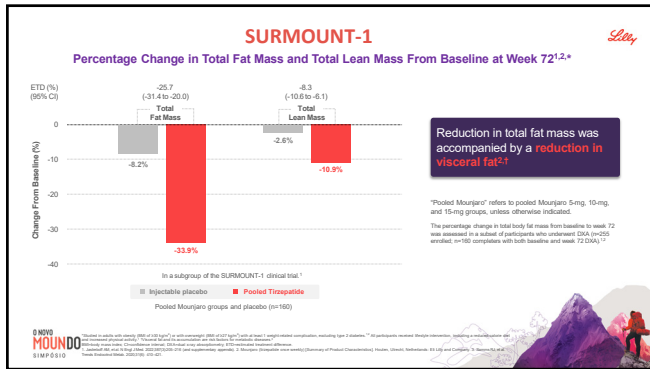


17

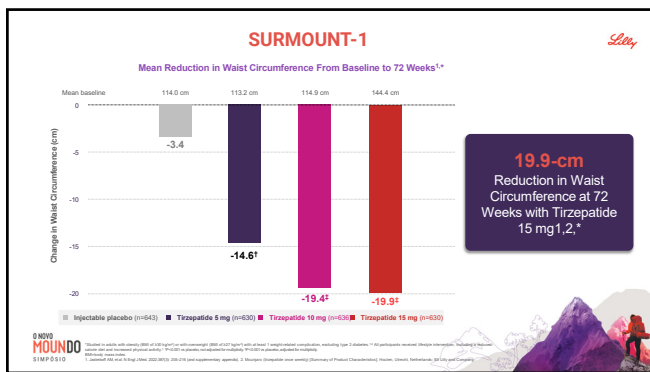


18

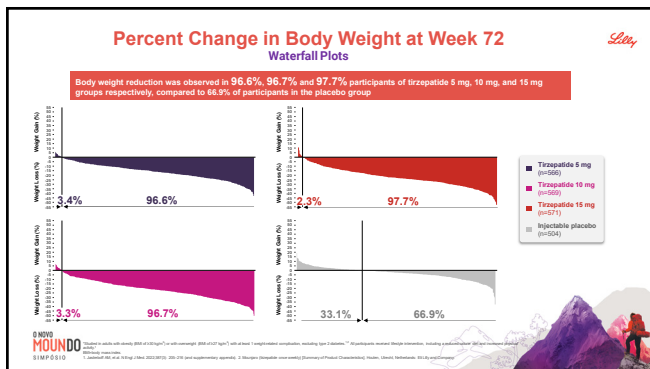
An introduction to Mounjaro - By Professor Alex Miras



19

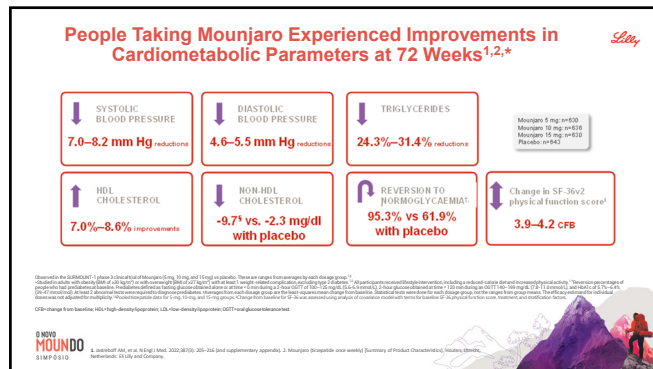


20

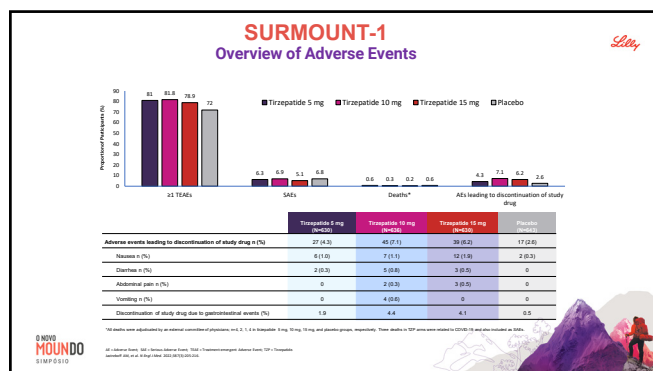


21

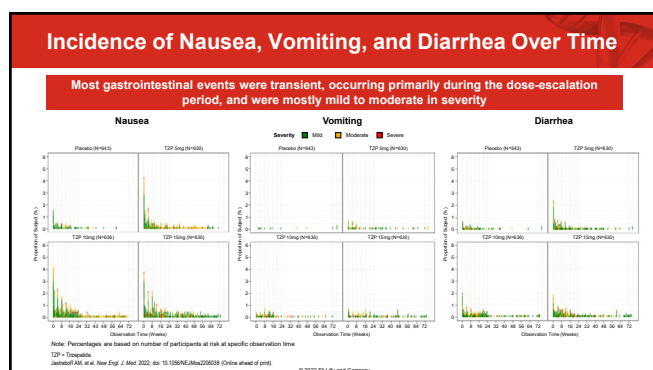
22



23



24



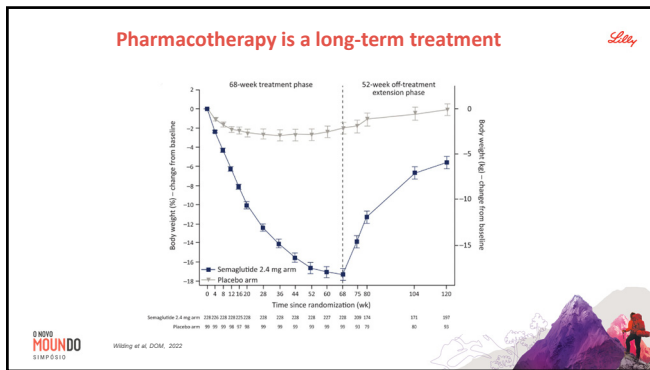
Adverse Events of Special Interest				
Adverse events of special interest n (%)	Tirzepatide 5 mg (N=636)	Tirzepatide 10 mg (N=636)	Tirzepatide 15 mg (N=636)	Placebo (N=643)
Hepatic events*	2 (0.3)	2 (0.3)	0	0
Malignancies	9 (1.4)	3 (0.5)	5 (0.8)	7 (1.1)
Pancreatitis (adjudication-confirmed)	1 (0.2)	1 (0.2)	1 (0.2)	1 (0.2)
MACE (adjudication-confirmed)	4 (0.6)	5 (0.8)	0	5 (0.8)
Cardiac disorders*	0	1 (0.2)	2 (0.3)	1 (0.2)
Severe or Serious Gastrointestinal Events	11 (1.7)	20 (3.1)	21 (3.3)	7 (1.1)
Gallbladder disease*	5 (0.8)	11 (1.7)	6 (1.0)	5 (0.8)
Renal events*	2 (0.3)	2 (0.3)	2 (0.3)	1 (0.2)
MDD/divisical ideation†	1 (0.2)	2 (0.3)	2 (0.3)	0
Hypersensitivity‡	0	1 (0.2)	1 (0.2)	0
Hypoglycemia (blood glucose <54 mg/dL)	9 (1.4)	10 (1.6)	10 (1.6)	1 (0.2)

*Events were classified as severe or serious adverse events.
†Events were classified as severe or serious supraventricular arrhythmias and cardiac conduction disorders.
‡Includes immediate (24 hours after first drug administration) and non-immediate (>24 hours after first drug administration) severe or serious hypersensitivity events.

MACE = Major Adverse Cardiovascular Events; MDD = Major Depressive Disorder.
Jain et al. *N Engl J Med* 2022; doi: 10.1056/NEJMoa2202028 (Online ahead of print).

© 2022 Eli Lilly and Company

25



26

Indications and Limitations of Use ¹	
<p>Therapeutic Indication</p> <p>Mounjaro is indicated as an adjunct to a reduced-calorie diet and increased physical activity for weight management, including weight loss and weight maintenance, in adults with an initial BMI of</p> <ul style="list-style-type: none"> ▶ ≥30 kg/m² (obesity) or ▶ ≥27 kg/m² to <30 kg/m² (overweight) in the presence of at least one weight-related comorbid condition (e.g., hypertension, dyslipidemia, obstructive sleep apnea, cardiovascular disease, prediabetes, or type 2 diabetes) 	<p>Limitations of Use</p> <ul style="list-style-type: none"> ▶ Mounjaro should not be used in combination with other tirzepatide-containing products or any GLP-1 receptor agonist ▶ The safety and efficacy of coadministration with other products for weight loss have not been established ▶ Mounjaro has not been studied in patients with a history of pancreatitis

BMi = body mass index; GLP-1 = glucagon-like peptide-1.
¹ Mounjaro (tirzepatide) oral solution [Summary of Product Characteristics]. Weston, United Kingdom: Eli Lilly and Company.

WEIGHT MANAGEMENT

© 2024 Eli Lilly and Company. All rights reserved. For specialist training purposes only.

27

27

An introduction to Mounjaro - By Professor Alex Miras

Starting and Continuing Mounjaro¹
A once-weekly subcutaneous injection¹

Mounjaro is available in 6 once-weekly doses, for patients' unique needs

START

2.5 MG/WEEK (Starting dose for 4 weeks) → 5.0 MG/WEEK (For at least 4 weeks)

INDIVIDUALIZE

7.5 MG/WEEK (For at least 4 weeks) → 10.0 MG/WEEK (For at least 4 weeks) → 12.5 MG/WEEK (For at least 4 weeks) → 15.0 MG/WEEK (Maximum dose)

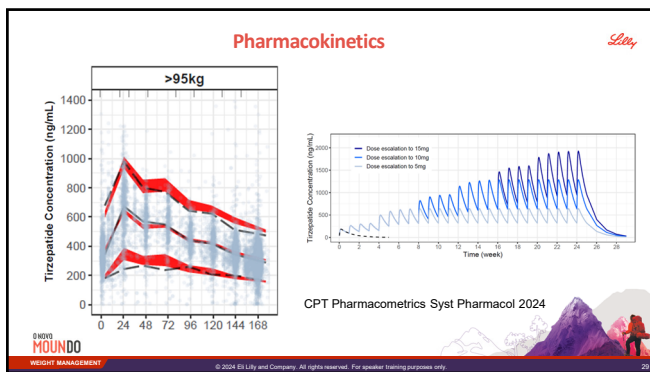
1. Initiate with the 2.5-mg starting dose
2. After 4 weeks on the 2.5-mg dose, increase to the 5-mg dose

If needed to achieve individual treatment goals, you can continue to increase the dose by 2.5 mg after at least 4 weeks at the current dose

For adults with obesity (BMI of ≥30 kg/m²) or with overweight (BMI of ≥27 kg/m²) with at least 1 weight-related comorbidity. BMI=body mass index.
1. Mounjaro (tirzepatide once weekly) (Summary of Product Characteristics) Novartis (UK) Limited, Northwick, UK. Lilly and Company.

WEIGHT MANAGEMENT © 2024 Eli Lilly and Company. All rights reserved. For speaker training purposes only. 28

28



29

Device

Lilly

Instructions for use
injection, for subcutaneous use

Multi-dose single-patient-use pre-filled pen
Each pen contains 4 fixed doses, one dose taken weekly.

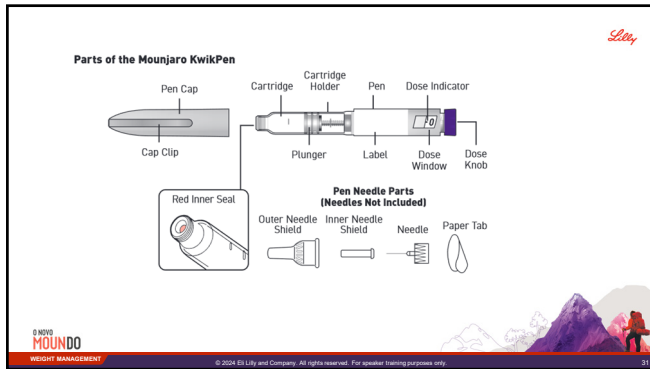
Mounjaro® 2.5 mg KwikPen solution for injection in pre-filled pen
Mounjaro® 5 mg KwikPen solution for injection in pre-filled pen
Mounjaro® 7.5 mg KwikPen solution for injection in pre-filled pen
Mounjaro® 10 mg KwikPen solution for injection in pre-filled pen
Mounjaro® 12.5 mg KwikPen solution for injection in pre-filled pen
Mounjaro® 15 mg KwikPen solution for injection in pre-filled pen

This Instructions for Use contains information on how to inject Mounjaro KwikPen.

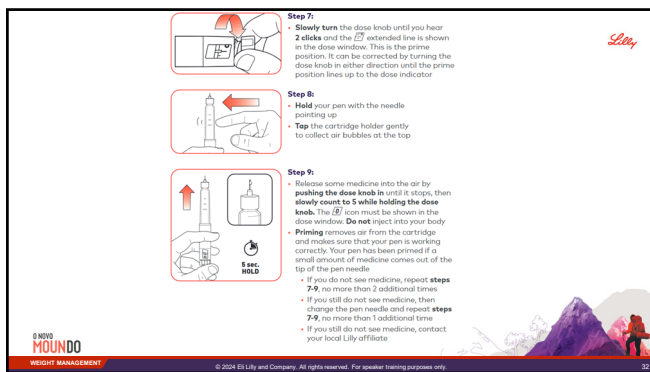
WEIGHT MANAGEMENT © 2024 Eli Lilly and Company. All rights reserved. For speaker training purposes only. 30

30

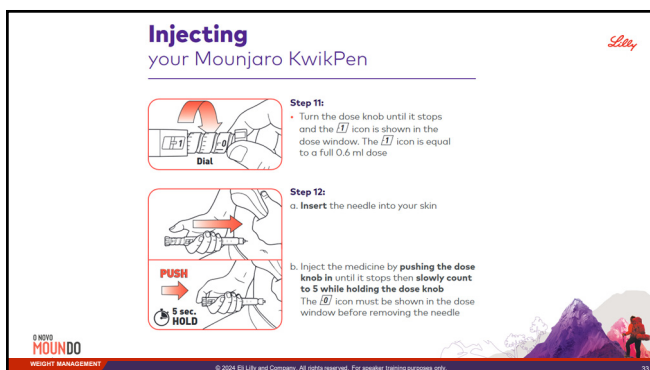
An introduction to Mounjaro - By Professor Alex Miras



31



32



33

<